

## FAQ

Frequently asked questions  
[www.trust.com/17595/faq](http://www.trust.com/17595/faq)

Trust International BV  
Laan van Barcelona 600  
3317DD, Dordrecht, NL

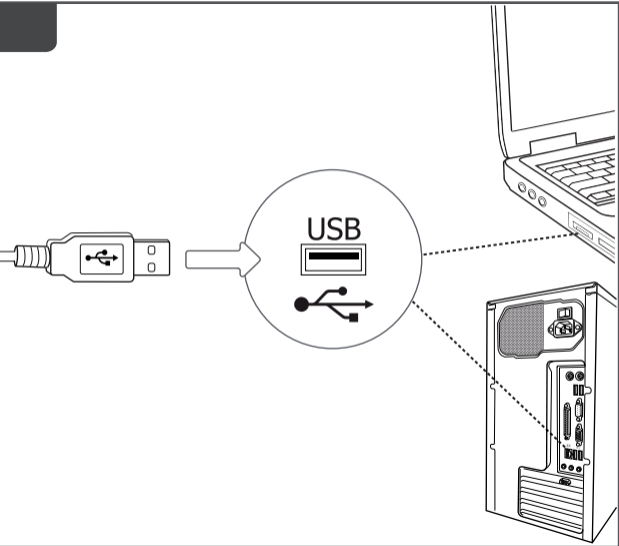
© 28-06-2016 Trust International B.V. All rights reserved.

**Trust**  
2.0 Speaker set

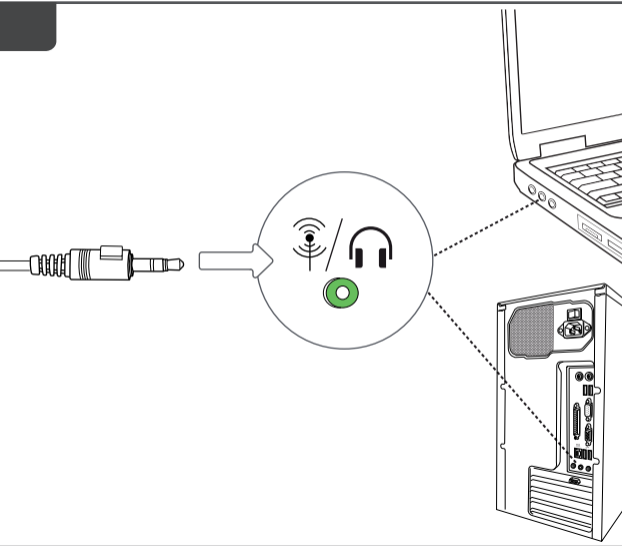


**Quick Installation Guide**

# 1. Connect power



# 2. Connect audio



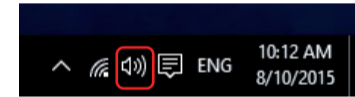
# 3. Installation - Windows 10/8/7/Vista

Only for Windows 8



Windows 10/7/Vista  
Start here

1



2

